



STRATEGIC ENVIRONMENT ASSESSMENT

FOR THIMPHU STRUCTURE PLAN 2002-2027

Presentation to the **Development Partners Group**

By Dasho Kinlay Dorjee, Mayor, Thimphu Thromde

Venue: UN Housel, Time: 11:00Hrs, Date: 30th August 2018

BACKGROUND

- ❖ Thimphu grew rapidly since 1955
- ❖ 1961 – Bhutan's First Fiver Year Plan
- ❖ 1st urban plan (1964) – remained unimplemented
- ❖ 2nd urban plan (1986) – guided growth in 1990s
- ❖ 1998 – strategic plan – influenced urban expansion from 8 to 26 sq. km
- ❖ 1999 – Cabinet's instruction to make Thimphu a dream city
- ❖ 2003 – Cabinet Approval of TSP 2002-27
- ❖ Current Population: 115,000
- ❖ Total no. of LAP: 14 (6 completed)



Analytical and participatory approach to strategic decision-making that aims to integrate environmental considerations into policies, plans and programs and evaluate the interlinkages with economic and social considerations (OECD DAC, 2006).

Environmental Assessment (EA) Act 2000 and Regulation on SEA 2002.

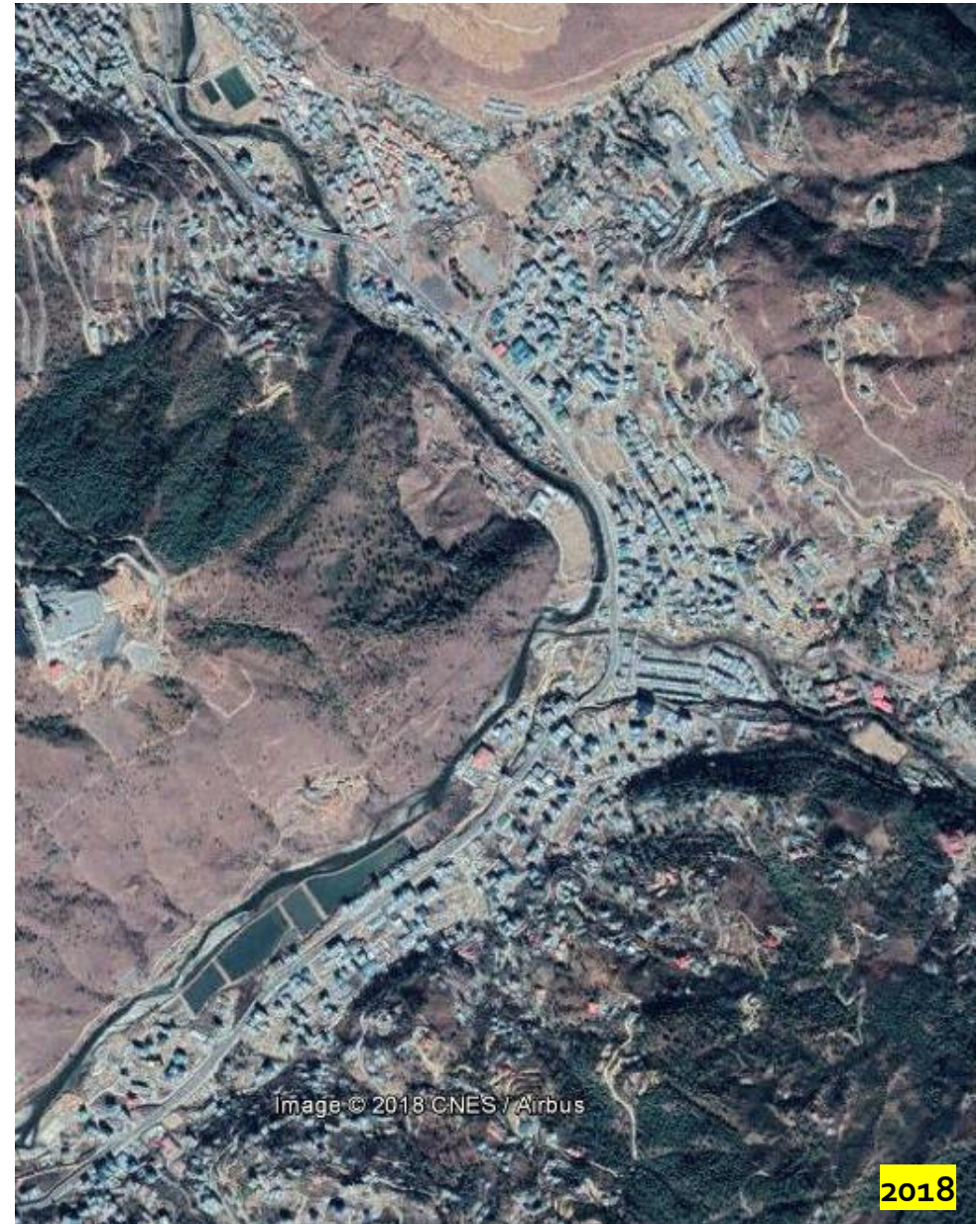
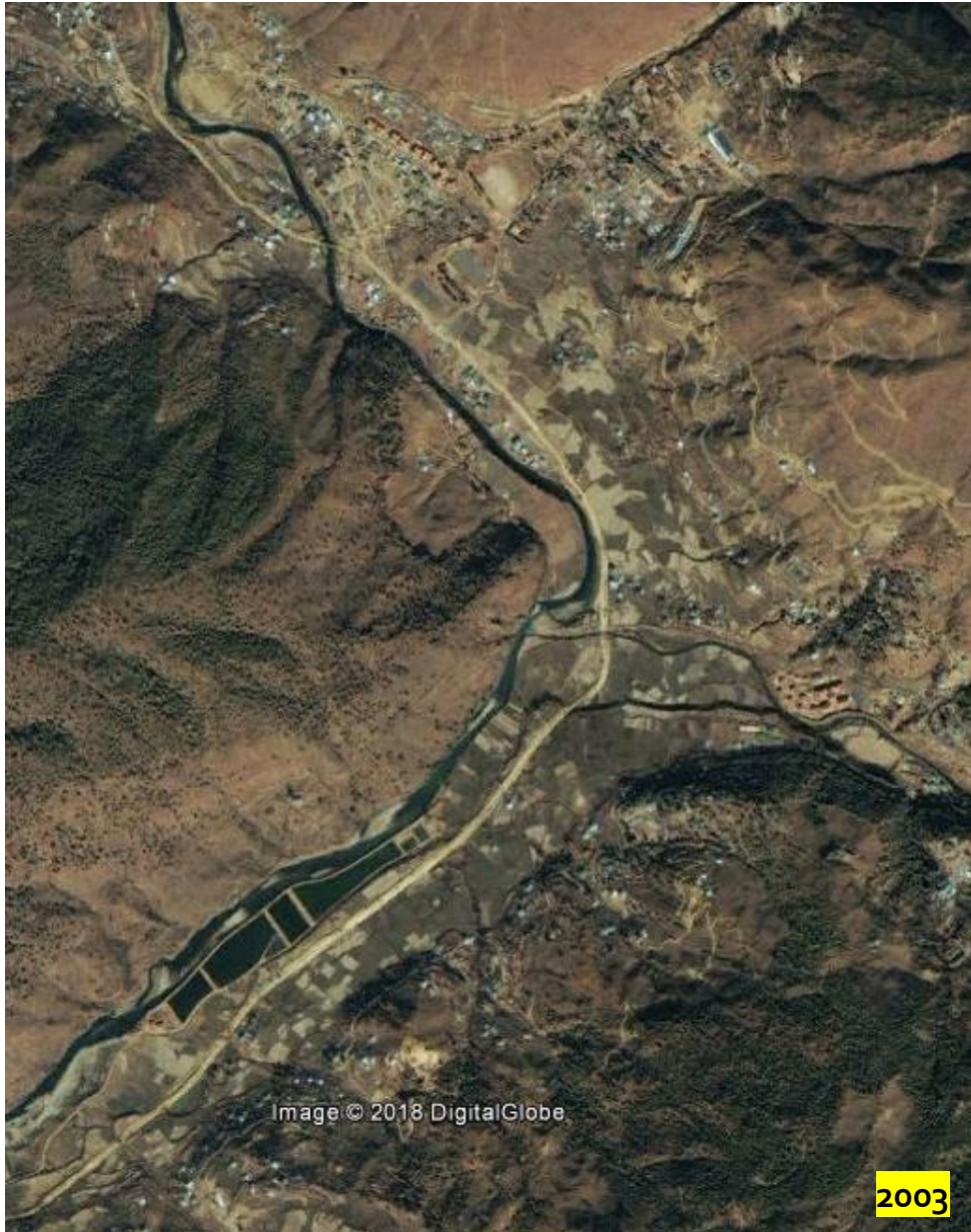


One Fifth of the Country's Population = Thimphu City's Population

A SEA of the TSP is **TIMELY** and crucial to review overarching PPPs that have a bearing on TSP to assess their impacts on env. and social fabric for mitigation and effective optimization and implementation of actions.

Purposes that this SEA will serve are:

- 1. Possible review, update or revision of the TSP*
- 2. Building capacities and experience in undertaking such assessments*
- 3. Integration of SEAs into a wider array of PPPs in the country*
- 4. Broad institutional and public engagement*



South Thimphu Change Detection (images from the Google Earth) between 2003 and 2018

Outcomes of SEA

1. Water Supply:

- *Develop Integrated Watershed Management Plan*
- *Develop Thimphu Thromde Water Supply Master Plan*

2. Transport:

- *Develop Integrated Mobility Plan*
- *Carry out detailed feasibility study for Bus Rapid Transit System and explore other alternatives*

3. Solid Waste Management:

- *Awareness*
- *Improve Collection (through segregation, increase no. of vehicles)*
- *Improve Waste Generation Data (provision of weighing bridge & data compilation)*

Outcomes of SEA

4. Waste Water Management:

- *Create Awareness*
- *Construction of Waste Water Treatment Facility*

5. Storm Water Management:

- *Develop Storm Water Management Plan*
- *Create Awareness for Behavioural Change Communication*

6. Disaster:

- *Adequate Fire Fighting Facilities*
- *Awareness*

Strengthen HR Capacity and foster Partnerships for inclusive participation during Planning, Implementation and Monitoring Phase.



Thank you